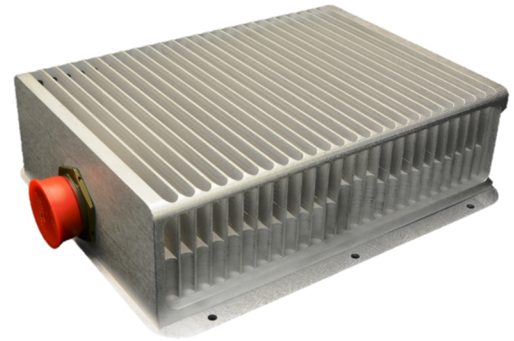


Features

- Single Output of 16 V, up to 640W
- 12 to 36 V Input
- Meets MIL-STD-1275E
- Environmentally Sealed
- Natural Convection Cooled
- Efficiency up to 96%
- Ripple 240 mVp-p
- Regulation 5%, line and load
- Non-Isolated



Brief Description

This environmentally sealed DC-DC power supply is designed to meet harsh environments. It complies with the input voltage requirements of MIL-STD-1275E. It is compact in size, weighs 8 lbs, and is natural convection cooled.

Environment

Temperature: -40°C to +71°C operating
 -40°C to +85°C non-operating
 Vibration: MIL-STD-202
 Shock: MIL-STD-202
 EMI: Per MIL-STD-461

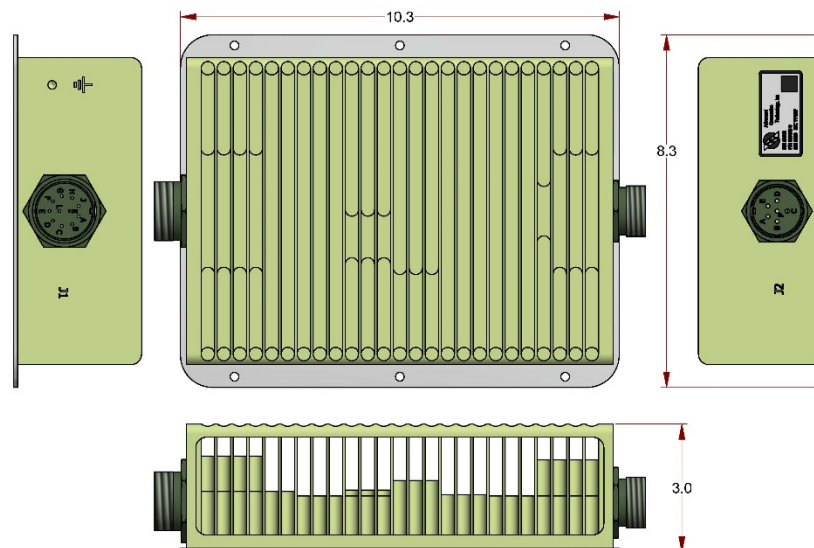
Voltage and Output Power

Vin	Vout	Max Output Power
12 to 36 VDC	16 VDC	640 W

Notes:

- 1) Maximum current is 40.0 A.
- 2) Output performance is derated by 20% at 71 °C.

Outline Drawing:



Size: 10.0 x 8.3 x 3.0 in

Connectors: Input (J1): D38999/24WG11PN, Output (J2): D38999/24WES6SN

For additional details, please contact ACT at (717) 939-2300 or salesinfo@actpower.com

© 2017, All Rights Reserved, Specifications subject to change without notice

2001 Fulling Mill Road • Middletown PA 17057 • 717 939-2300 • F: 717 939-7170 • www.actpower.com

