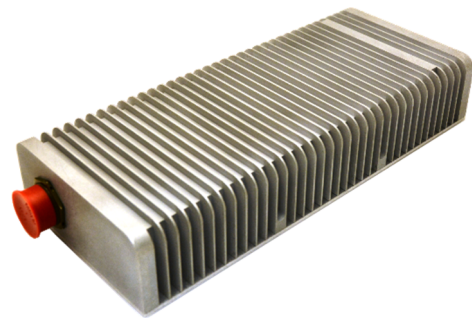




**Features**

- 12 V output, 50 W
- 85 to 264 VAC, 1 phase, 50-400 Hz
- Meets MIL-STD-704
- On-Off Switch
- Natural Convection Cooled
- Efficiency >86%
- Ripple 1% Vout max (pk-pk)
- Regulation 5%, line and load
- Isolated



**Brief Description**

This enclosed AC-DC power supply is designed to meet inhabited environments. It complies with the input voltage requirements of MIL-STD-704 and has a hold-up time of 50 msec. It weighs 8 lbs and is natural convection cooled.

**Input Voltage**

85 to 264 VAC, 1 phase, 50-400 Hz

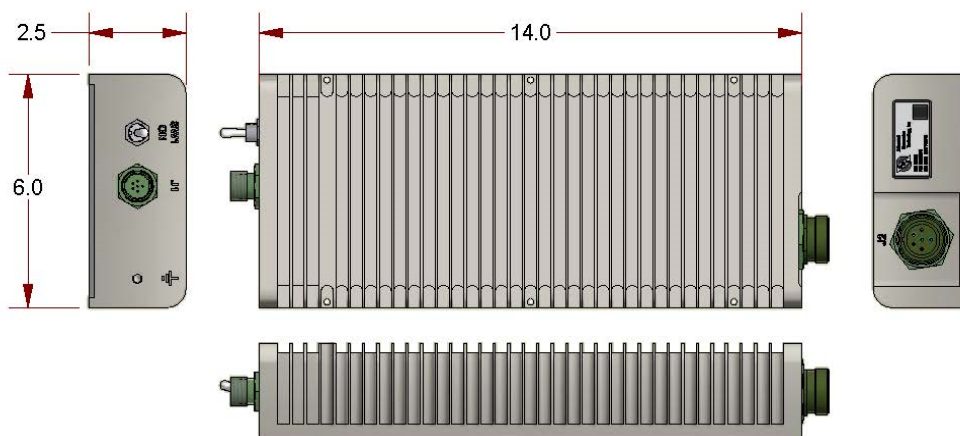
**Output Voltage, Currents, and/or Power**

12 V at 50 W

**Environment**

Temperature: -40°C to +71°C operating  
 -40°C to +85°C non-operating  
 Vibration: MIL-STD-202G, NAVMAT P-9492  
 Shock: MIL-STD-202, Method 213, Test Cond J  
 EMI: MIL-STD-461 CE101, CE102

**Outline Drawing**



**Size:** 14.0 x 6.0 x 2.5 in

**Connectors:** Input (J1): D38999/24WB98PN, Output (J2): D38999/24WE6SN

*For additional details, please contact ACT at (717) 939-2300 or [salesinfo@actpower.com](mailto:salesinfo@actpower.com)*

© 2017, All Rights Reserved, Specifications subject to change without notice

2001 Fulling Mill Road • Middletown PA 17057 • 717 939-2300 • F: 717 939-7170 • [www.actpower.com](http://www.actpower.com)

