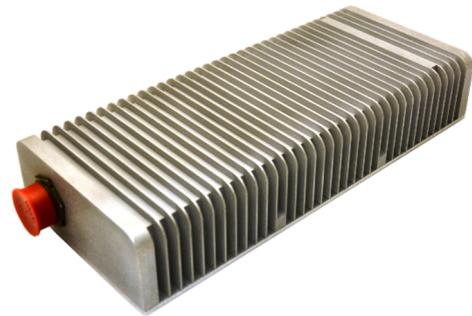




Features

- 12 V output, 100 W
- 85 to 264 VAC, 1 phase, 50-400 Hz
- Meets MIL-STD-704
- On-Off Switch
- Natural Convection Cooled
- Efficiency >86%
- Ripple 1% Vout max (pk-pk)
- Regulation 5%, line and load
- Isolated



Brief Description

This enclosed AC-DC power supply is designed to meet inhabited environments. It complies with the input voltage requirements of MIL-STD-704 and has a hold-up time of 50 msec. It weighs 8 lbs and is natural convection cooled.

Input Voltage

85 to 264 VAC, 1 phase, 50-400 Hz

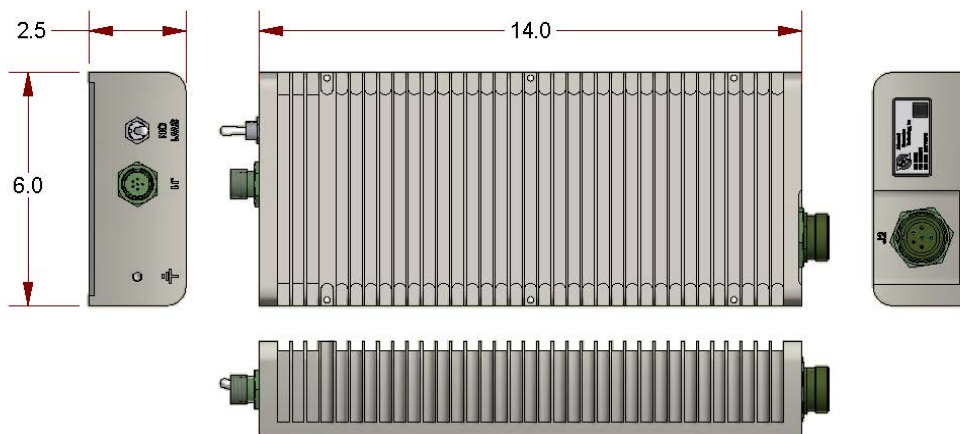
Output Voltage, Currents, and/or Power

12 V at 100 W

Environment

Temperature: -40°C to +71°C operating
 -40°C to +85°C non-operating
 Vibration: MIL-STD-202G, NAVMAT P-9492
 Shock: MIL-STD-202, Method 213, Test Cond J
 EMI: MIL-STD-461 CE101, CE102

Outline Drawing



Size: 14.0 x 6.0 x 2.5 in

Connectors: Input (J1): D38999/24WB98PN, Output (J2): D38999/24WE6SN

For additional details, please contact ACT at (717) 939-2300 or salesinfo@actpower.com

© 2017, All Rights Reserved, Specifications subject to change without notice

2001 Fulling Mill Road • Middletown PA 17057 • 717 939-2300 • F: 717 939-7170 • www.actpower.com

