

## DC-DC MIL-COTS

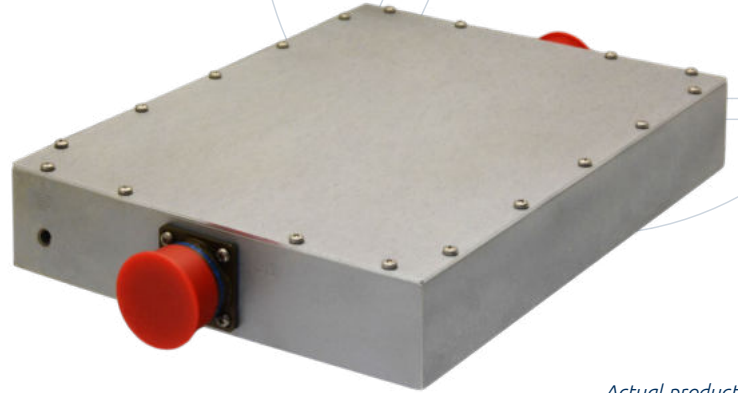
### PRODUCT # SW2511006-28

**12–36 VDC**  
Input Voltage

**28 VDC**  
Output Voltage

**1000 W**  
Output Power

**1**  
# of Outputs



*Actual product appearance may vary.*

## PRODUCT DESCRIPTION

This DC-DC power supply is designed to perform and protect in harsh, military environments. It is environmentally sealed to meet IP67 when mated with connectors and cable assemblies. It is compact in size, weighing approximately 8 lb, and is base plate cooled. It is designed to meet the input power requirements of MIL-STD-1275E. All ACT products feature our proven quality and are trusted to perform when it matters most. Custom output voltages are available—contact ACT for more information.

## ENVIRONMENT

Designed to meet MIL-STD-810



### TEMPERATURE

-40°C to +71°C operating, -40°C to +85°C non-operating



### HUMIDITY

Up to 100% condensing with sealed mating connectors and cable assemblies attached



### VIBRATION

Designed to meet NAVMAT P-9492



### SHOCK

Designed to meet MIL-STD-202, Method 213, Test Condition J



### EMI

Designed to meet MIL-STD-461G, CE102

## FEATURES

- Single output of 28 V up to 1000 W
- 12–36 VDC input
- Designed to meet MIL-STD-1275E
- Efficiency up to 96%
- Output current maximum of 35.7 A
- Ripple  $\leq$  240 mVp-p
- Regulation 5%, line and load
- Non-isolated
- *See derating details on page 3*

CONTACT US



2001 Fulling Mill Road | Middletown, PA 17057  
717.939.2300 | CAGE: 60642

ACTPower.com | 

## DC-DC MIL-COTS

**PRODUCT # SW2511006-28**

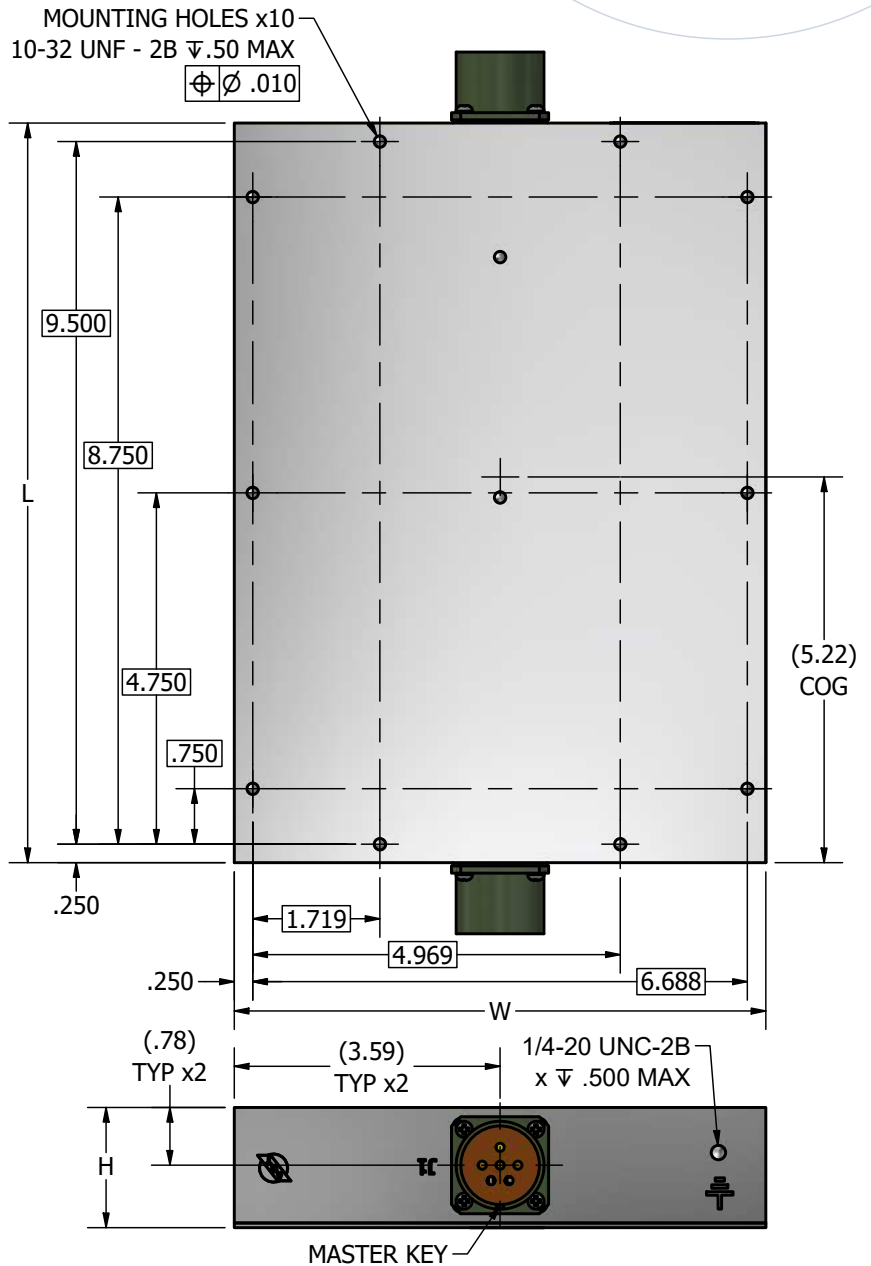
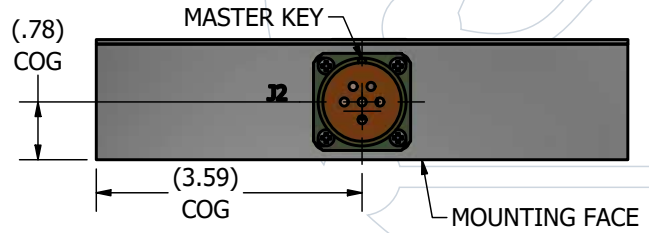
### MECHANICAL INFORMATION

- 10.05" (L) x 7.195" (W) x 1.70" (H) Max
- Approx. 8 lb
- Clear Iridite, Chemically filmed in accordance with MIL-DTL-5541, Type 2, Class 1A
- Environmentally sealed to meet IP67 when mated with connectors and cable assemblies
- Alternative connector finishes may be available—contact us to learn more

### CONNECTORS

J1 Input: D38999/20WE6PN	
PIN	DESCRIPTION
A	+ V <sub>IN</sub>
B	+ V <sub>IN</sub>
C	+ V <sub>IN</sub>
D	- V <sub>IN</sub>
E	- V <sub>IN</sub>
F	- V <sub>IN</sub>
Suggested Mate: D38999/26WE6SN	

J2 Output: D38999/20WE6SN	
PIN	DESCRIPTION
A	+ V <sub>OUT</sub>
B	+ V <sub>OUT</sub>
C	OPEN
D	- V <sub>OUT</sub>
E	- V <sub>OUT</sub>
F	OPEN
Suggested Mate: D38999/26WE6PN	



**CONTACT US**



2001 Fulling Mill Road | Middletown, PA 17057  
717.939.2300 | CAGE: 60642

**ACTPower.com** | 

## DC-DC MIL-COTS

### PRODUCT # SW2511006-28

#### VOLTAGE & OUTPUT POWER DERATING

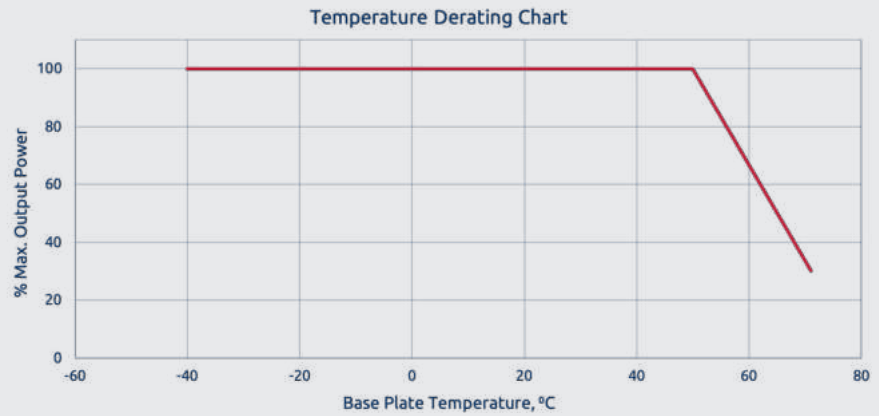
1000 W output power can be achieved for 1 second with 12 VDC input voltage and 30 seconds with 16 VDC input voltage

V <sub>IN</sub> (VDC)	V <sub>OUT</sub> (VDC)	MAX OUTPUT POWER (W)
12 to 15	28	580
16 to 19	28	790
20 to 36	28	1000

#### DERATING

##### NOTES

- Output performance is derated linearly from 0% at 50°C to 30% at 71°C



#### COOLING

Base plate cooled. See “Derating Chart” above for additional information.

#### ISOLATION & PROTECTIONS

##### ISOLATION

- Non-isolated input/output
- Isolated input/chassis and output/chassis

##### PROTECTION

Reverse polarity, overtemperature, short circuit, and overvoltage with auto recovery

[CONTACT US](#)



## DC-DC MIL-COTS

### PRODUCT # SW2511006-28



### MAKE IT A MOTS

The right power solution helps keep equipment functioning properly in the field. MOTS, or Modified Off-The-Shelf, power supplies are adapted, ruggedized, and designed to meet the unique demands of your application.

The fast, budget-friendly answer for meeting your environmental requirements —ask us about making this power supply a MOTS.

## SW2511006 SERIES SELECTOR GUIDE

ACT Product #	V <sub>IN</sub> (VDC)	# of Outputs	V <sub>OUT</sub> (VDC)	Output Power (W)	Heatsink
SW2511006-12	12 to 36	1	12	480	N
SW2511006-12-01	12 to 36	1	12	480	Y
SW2511006-15	12 to 36	1	15	600	N
SW2511006-15-01	12 to 36	1	15	510	Y
SW2511006-16	12 to 36	1	16	640	N
SW2511006-16-01	12 to 36	1	16	510	Y
SW2511006-18	12 to 36	1	18	720	N
SW2511006-18-01	12 to 36	1	18	715	Y
SW2511006-22	12 to 36	1	22	880	N
SW2511006-22-01	12 to 36	1	22	840	Y
SW2511006-24	12 to 36	1	24	960	N
SW2511006-24-01	12 to 36	1	24	1000	Y
SW2511006-26	12 to 36	1	26	1000	N
SW2511006-26-01	12 to 36	1	26	1000	Y
SW2511006-28	12 to 36	1	28	1000	N
SW2511006-28-01	12 to 36	1	28	1000	Y
SW2511006-32	12 to 36	1	32	1000	N
SW2511006-32-01	12 to 36	1	32	1000	Y

**CONTACT US**



2001 Fulling Mill Road | Middletown, PA 17057  
717.939.2300 | CAGE: 60642

**ACTPower.com** | 